

Brit Catchment Recovery Project

Supporting information deck for applicants



Landscape Recovery

Contents

West Dorset Wilding

Landscape Recovery – Brit Catchment Recovery Project

The Team

What next



West Dorset Wilding

- We are a registered charity constituted in 2021, but in discussion for much longer
- It was set up, and is led by landowners and farmers from the local area
- There are currently seven voting members and farmers and landowners
- We also have public and corporate membership schemes which are both growing in numbers
- We have worked on some small projects, looking at a baseline of the Brit Catchment and a feasibility for a wild release of beavers
- See westdorsetwilding.org for more information about the charity and the projects

West Dorset Wilding: Vision

Our vision is for a West Dorset with more wildlife and biodiversity, improved water, air and soil quality, better natural flood management and through natural processes, is tackling the impacts of climate change.

We want to reconnect people with nature, enabling them to as enjoy its wildlife and habitats in all its beauty and diversity.



West Dorset Wilding

We have a three-pronged approach to our work:

- 1) Supporting natural process-led ecosystem restoration, including approaches that are used in wilding or rewilding
- 2) Encouraging productive farmers to adopt regenerative and/or organic practices
- 3) Helping people to reconnect with nature and the countryside, to support wellbeing and sense of place

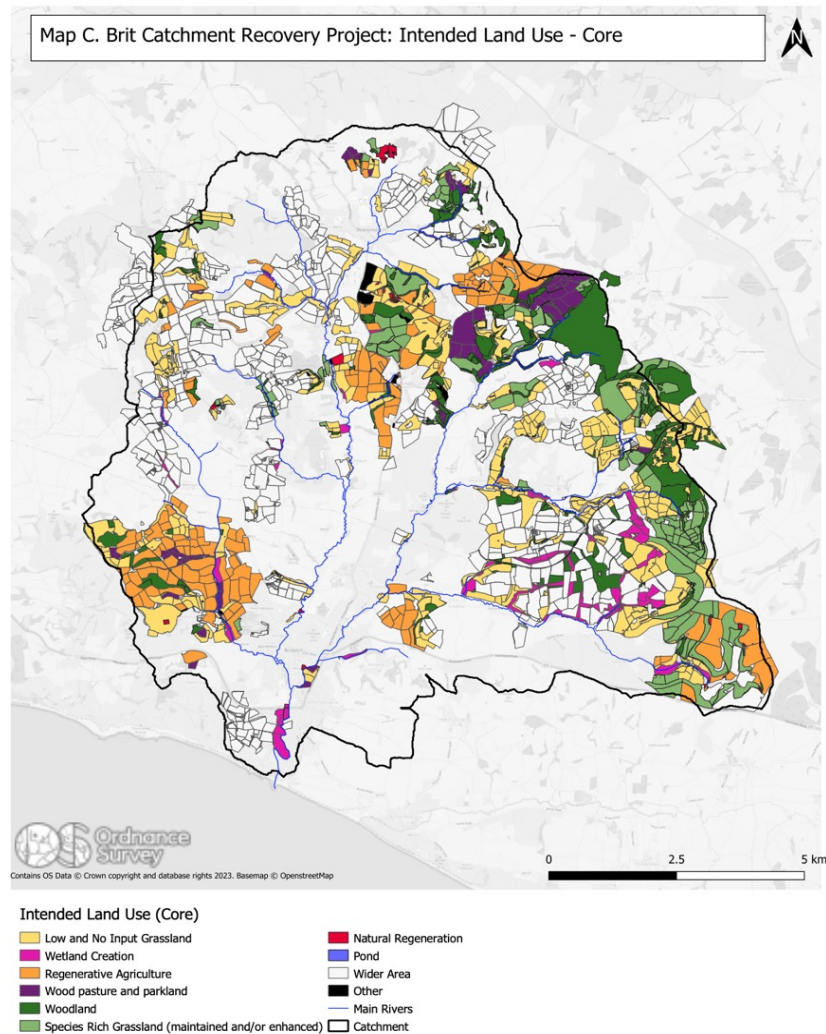


Landscape Recovery – Brit Catchment Recovery Project

- **Landscape Recovery** is one of the government's new Environmental Land Management (ELM) schemes. It is looking for large scale improvements in biodiversity, carbon storage and sequestration alongside continued food production and social benefits. No small task. More details can be found [here](#).
- **West Dorset Wilding** has been successful in Round 2 of this scheme with the Brit Catchment Recovery Project. We are looking to start work on April 1st to deliver the Project Development Phase, for which we have funding, and get to grips with this amazing opportunity to make a lasting change for nature at scale.
- We have put together a **partnership of 53 farmers**, and included just under 3,700 ha of land into the scheme. Land-use changes will lead to increased wetlands, high value grasslands, wood pasture, scrub and natural regeneration, and we have a range of supporting initiatives including reintroduction feasibility for water voles and beavers, deer management, flying pigs, education and community engagement.
- You can **find out more** about the project [here](#), and if you are interested in one of the jobs, contact us and we will email you our submission.



Landscape Recovery – Brit Catchment Recovery Project



53 landowners

c. 3,700 ha. Core – 38% of rural area in the wider catchment

Intended land-use:

- Low/no input grassland
- Species rich grassland
- Wetlands and riparian corridors
- Wood pasture
- Scrub and natural regeneration
- Woodland
- Offline ponds
- Regenerative and regen/organic farming

Brit Catchment Recovery project Schematic

LAND CHANGES

Tree planting and natural regen

Reintroductions feasibility – Beavers / water voles - tbc

SUPPORTING ACTIONS

Forest and woodland improvements for nature and/or maintenance

Hydrological changes feasibilities – rewiggling, Lower Brit wetland creation, beaver analogies, sediment traps

Riparian land reversion to wetland and offline pond creation

Deer Management

Species-rich and low input grassland creation

'Flying Pig' club development

Arable and improved pasture 'reversion' to scrub and wood pasture

Education, volunteering, citizen science

Schools and forest schools

Protected Sites maintenance and/or improvements

Outcomes
 Improved biodiversity
 Increased carbon capture
 Improved water quality
 Maintained food production
 Better flood management
 Social and community benefits

Social Wilding – public volunteering

Intensive farming changes to organic or regen

Peer learning e.g. river management



Existing regen or organic farms long term commitment

Local food security links



The Team

We need a dynamic and inspiring team to make this project happen. It will look something like this, with greyed out posts already filled. We will be based at an office within the catchment, and there will be an expectation the staff will undertake a flexible mix of office-based, home and field working.

- Project Director (0.5 FTE) Dr Sam Rose
- **Project Manager (0.8FTE) Vacant**
- Project Officer – Land (0.5FTE job share) Nick Gray
- **Project Officer – Land (0.5FTE job share) Vacant**
- Project Officer – People (0.5FTE) Dana Assinder
- Administrator and bookkeeper – (0.4FTE) Vacant



What next?

Download the Job Description at westdorsetwilding.org/jobs

Good luck!

